

SPECIAL DISTRICT PUBLIC DISCLOSURE DOCUMENT
§ 32-1-104.8, C.R.S.

Name of District: Heritage Ridge Metropolitan District

The District has the following powers and is authorized to provide the following services: plan for, design, acquire, construct, install, relocate, redevelop, provide and finance the Public Improvements and related operation and maintenance services within and without the boundaries of the District, including all services, facilities, equipment and other improvements authorized under the Special District Act.

The District's Service Plan, which can be amended from time to time, includes a description of the District's powers and authority. A copy of the Service Plan is available from the Division of Local Government in the State Department of Local Affairs.

The District is authorized by Title 32, Article 1, Colorado Revised Statutes to use a number of methods to raise revenues for capital needs and general operations costs. These methods, subject to the limitations imposed by Section 20 of Article X of the Colorado Constitution, include issuing debt, levying taxes, and imposing fees and charges. Information concerning directors, management, meetings, elections, and current taxes are provided annually in the Notice to Electors described in Section 32-1-809(1), Colorado Revised Statutes, which can be found at the District office, on the District's web site, on file at the Division of Local Government in the State Department of Local Affairs, or on file at the office of the Clerk and Recorder of each county in which the Special District is located.

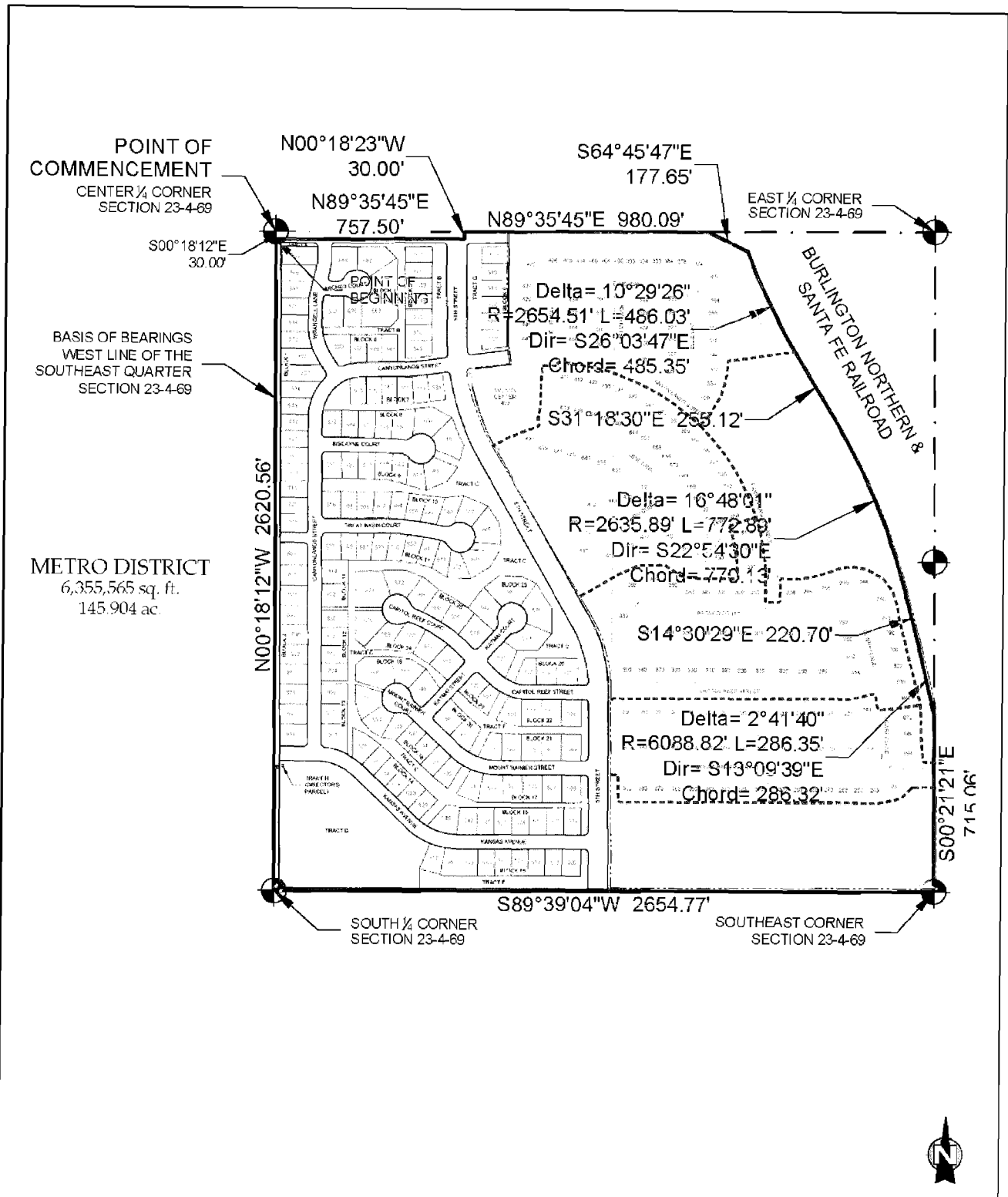
For information regarding the District's authority and operation, please contact the District's Manager:


Centennial Consulting Group
2619 Canton Court, Suite A
Fort Collins, CO 80525
970-484-0101
www.heritageridgemd.com

Attached as Exhibit A is a map of the District's boundaries.

EXHIBIT A

MAP



 <p>NORTHERN ENGINEERING</p> <p>501 N. Lewis Street, Suite 102 Fort Collins, Colorado 80521</p> <p>PHONE: 970.221.4258 www.northernengineering.com</p>	<p>HERITAGE RIDGE METRO DISTRICT</p> <p>BERTHOUD COLORADO</p>		<p>DESCRIPTION METRO DISTRICT EXHIBIT</p>		
			<p>DRAWN BY L SMITH</p>	<p>SCALE 1"=500'</p>	<p>DRAWING 1</p>
			<p>DATE OCTOBER 17, 2012</p>	<p>PROJECT 087 002</p>	